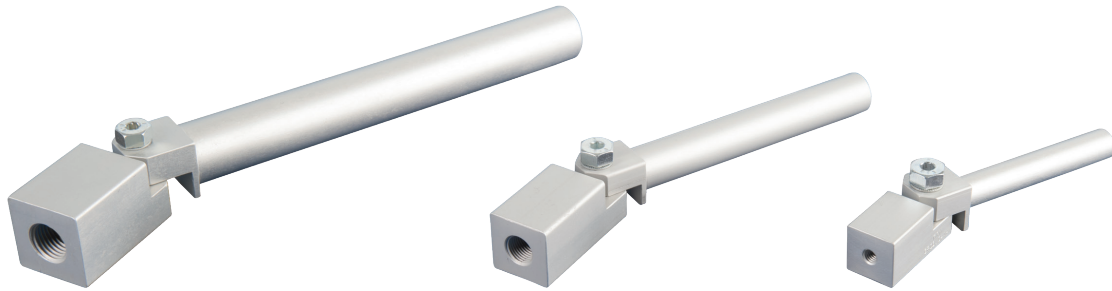




Gripper arms | Suction fingers – rigid

Suction fingers for vacuum cups – swivel

Suction fingers for vacuum cups – swivel



Product notes

- > Components for mounting vacuum cups
- > Angle adjustment +/- 90°

Technical data

| Item no. | Weight [g] | Dimensions | | | | | | |
|-----------|------------|------------|------|----------|--------|--------|--------|--------|
| | | ∅ A [mm] | F | □ B [mm] | C [mm] | E [mm] | H [mm] | L [mm] |
| GR03.040A | 35 | 10 | M5 | 16 | 66.5 | 11 | 21.7 | 30 |
| GR03.041A | 38 | 10 | M5 | 16 | 101.5 | 11 | 21.7 | 60 |
| GR03.042A | 43 | 10 | M5 | 16 | 131.5 | 11 | 21.7 | 90 |
| GR03.050A | 58 | 14 | G1/8 | 20 | 99 | 13 | 23.7 | 45 |
| GR03.051A | 69 | 14 | G1/8 | 20 | 144 | 13 | 23.7 | 90 |
| GR03.052A | 78 | 14 | G1/8 | 20 | 184 | 13 | 23.7 | 130 |
| GR03.070A | 72 | 20 | G1/8 | 20 | 106 | 15 | 25.7 | 50 |
| GR03.071A | 87 | 20 | G1/8 | 20 | 156 | 15 | 25.7 | 100 |
| GR03.072A | 103 | 20 | G1/8 | 20 | 206 | 15 | 25.7 | 150 |
| GR03.074A | 106 | 20 | G1/4 | 25 | 158 | 15 | 28.2 | 100 |
| GR03.075A | 123 | 20 | G1/4 | 25 | 208 | 15 | 28.2 | 150 |

Dimensions

