



# Grippers | Sprue grippers

Series 840 – power grippers with stroke, clamping diameter 30 mm

## Series 840 – power grippers with stroke, clamping diameter 30 mm



DETECTS SPRUES LARGER 1 MM



### Product notes

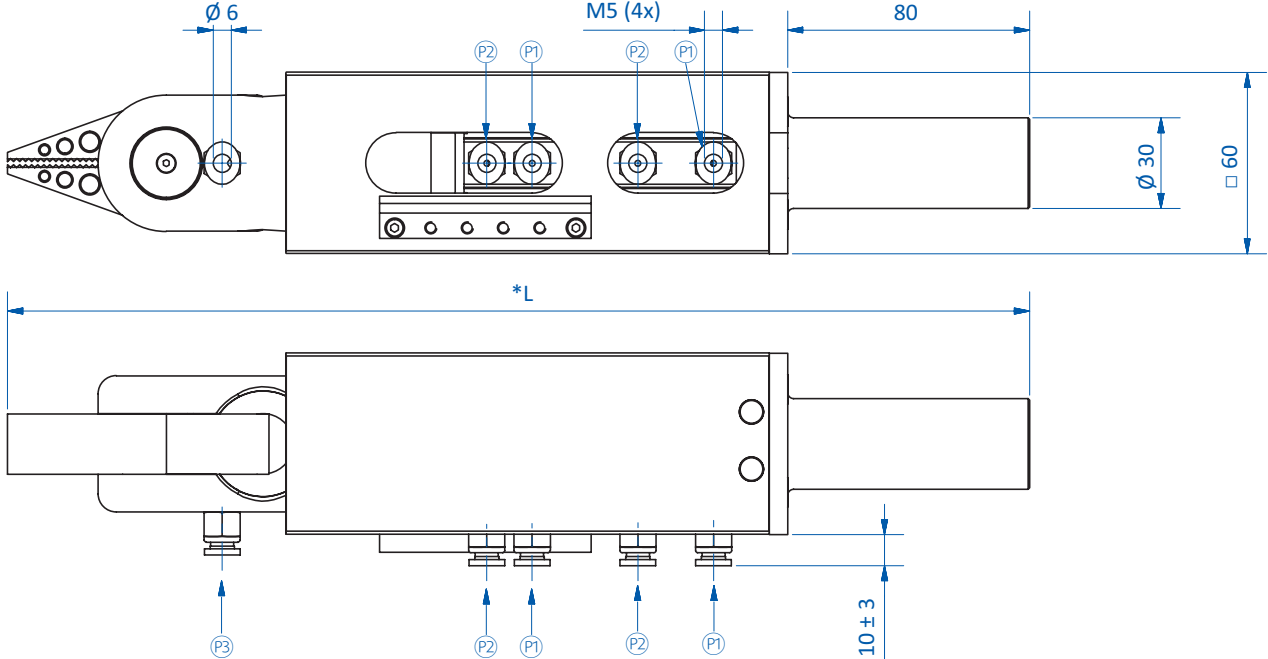
- > Grippers with high gripping force and narrow closing gap for flat sprues
- > Feed stroke (cylinder 1) moves gripper towards the mold for part removal
- > Back stroke (cylinder 2) fully retracts gripper to enable undisturbed part release, e.g. on a conveyor belt
- > Grippers are self-centering
- > Medium: filtered and oiled/unooled air
- > Suitable for heavy-duty applications due to closed, coaxial cylinder guiding
- > Part control via large area sensor activation, regardless of sprue position (GR04.140B, GR04.140B/NPN)
- > Detection of stroke via optional cylinder sensors
- > Easy exchange of jaws without snap-rings
- > If required, the grippers can quickly be changed over to non-self-centering
- > Included in scope of delivery of GR04.840B: sensor GR04.131-S1, resp. GR04.131-S2, cable 0.2 m, 3-pin M8 male connector, free end; extension cable 2 m, 3-pin M8 male connector, free end
- > Please refer to "suitable sensors" for cylinder sensors

### Technical data

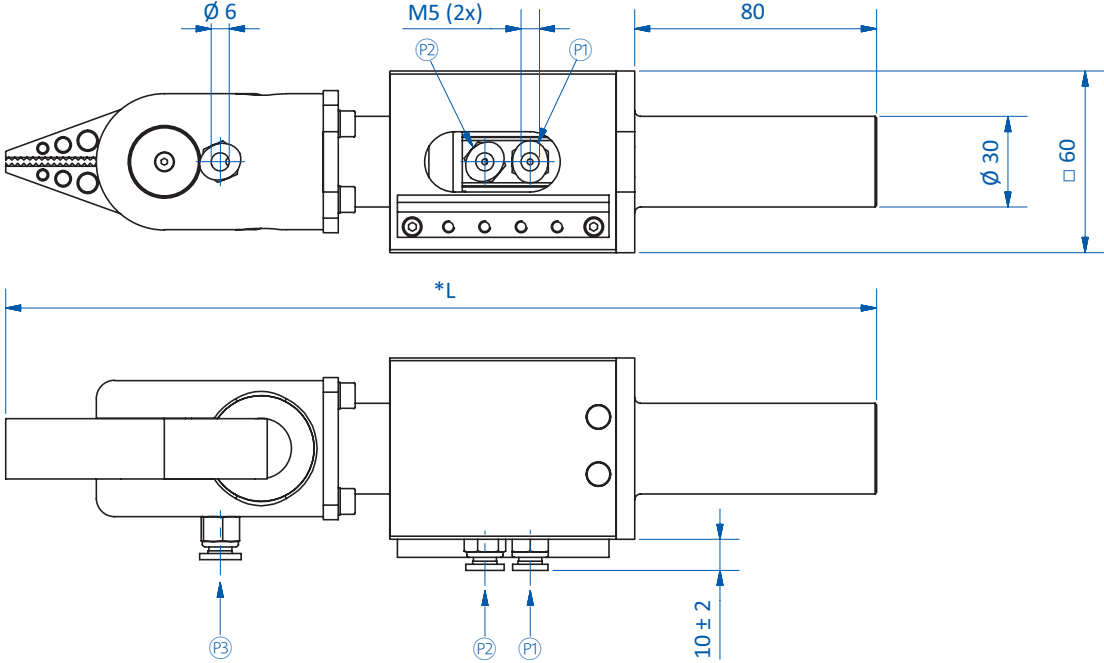
Item no.	Operating pressure [bar (psi)]	Sensor	Closing force at 6 bar (87 psi) [N]	Weight [g]	Stroke 1 [mm]	Stroke 2 [mm]	Suitable sensors
GR04.840A-20-30	6 (87)	without	380	1,540	30	20	GR04.202N GR04.202P GR04.280N GR04.280P
GR04.840B-20	6 (87)	PNP	380	1,130	20	without	GS04.001 GR04.202P GR04.280P
GR04.840B-30	6 (87)	PNP	380	1,200	30	without	GS04.001 GR04.202P GR04.280P
GR04.840B-20-20	6 (87)	PNP	380	1,500	20	20	GS04.001 GR04.202P GR04.280P
GR04.840B-20-30	6 (87)	PNP	380	1,560	30	20	GS04.001 GR04.202P GR04.280P
GR04.840B-20/NPN	6 (87)	NPN	380	1,130	20	without	GS04.002 GR04.202N GR04.280N
GR04.840B-30/NPN	6 (87)	NPN	380	1,200	30	without	GS04.002 GR04.202N GR04.280N
GR04.840B-20-20/NPN	6 (87)	NPN	380	1,500	20	20	GS04.002 GR04.202N GR04.280N
GR04.840B-20-30/NPN	6 (87)	NPN	380	1,560	30	20	GS04.002 GR04.202N GR04.280N



Dimensions



GR04.840A-20-30 | GR04.840B-20-20 | GR04.840B-20-30 | GR04.840B-20-20/NPN | GR04.840B-20-30/NPN



GR04.840B-20 | GR04.840B-30 | GR04.840B-20/NPN | GR04.840B-30/NPN

\* = The length L refers to the gripper with retracted cylinders. Total length = L + stroke 1 (resp. stroke 1 + stroke 2). P1 = Compressed air connection cylinder extended P2 = Compressed air connection cylinder retracted P3 = Compressed air connection gripper



## Grippers | Sprue grippers

Series 840 – power grippers with stroke, clamping diameter 30 mm

Item no.	L [mm]
GR04.840A-20-30	358
GR04.840B-20	298
GR04.840B-30	308
GR04.840B-20-20	348
GR04.840B-20-30	358
GR04.840B-20/NPN	298
GR04.840B-30/NPN	308
GR04.840B-20-20/NPN	348
GR04.840B-20-30/NPN	358