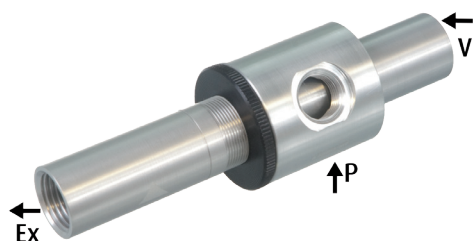




# Vacuum generation | Feed ejectors

Feed ejectors – adjustable

## Feed ejectors – adjustable



### Product notes

- > High suction power for safe handling of air-permeable products or generally in the presence of high leakage
- > Gentle transportation of powdery substances or small-size products such as granular material, coffee, flour
- > Extraction of non-aggressive vapors and gases
- > Volume of suction air and required vacuum level can be adjusted by turning the suction pipe, allowing for an energy efficient increase in performance without increasing air consumption
- > Can even be used in rough conditions thanks to the robust, maintenance-free construction without moving parts
- > No build-up of heat because of no moving parts and therefore no risk of ignition during transport
- > High maximum vacuum level for overcoming larger height differences
- > Extremely flexible integration into gripper systems thanks to any mounting position

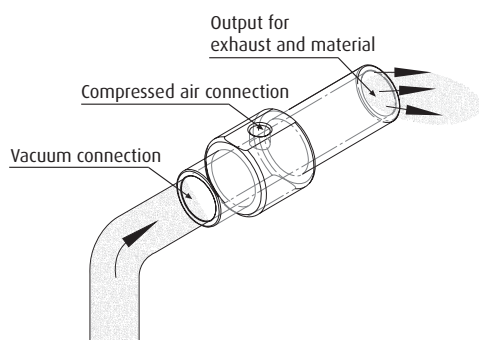
### Notes

- > The transport length depends on the feed pressure, the transport volume and the transport goods
- > Rule of thumb:
  - Tubing length from suction point to ejector ~ 2/3 of the total tubing length
  - Tubing length from ejector to point of use ~ 1/3 of the total tubing length
- > Prior to installation a test at customer site is recommended
- > For longer distances, multiple ejectors can be serially connected

### Technical data

Item no.	Nozzle diameter [mm]	Material	Pressure range [bar (psi)]	Optimal operating pressure [bar (psi)]	Final vacuum [mbar (inHg)]	Suction power [l/min]	Air consumption [l/min]	Operating temperature [°C (°F)]	Weight [g]	Suitable silencers
65.701	6.5	Aluminum anodized	4 - 7 (58 - 101.5)	5.5 (79.8)	840 (24.8)	0 - 284	0 - 342	-20 - 80 (-4 - 176)	105	72.029
65.711	10	Aluminum anodized	4 - 7 (58 - 101.5)	5.5 (79.8)	840 (24.8)	0 - 848	0 - 825	-20 - 80 (-4 - 176)	275	72.031
65.731	19	Aluminum anodized	4 - 7 (58 - 101.5)	5.5 (79.8)	840 (24.8)	0 - 3,402	0 - 2,550	-20 - 80 (-4 - 176)	550	72.033

### Functional principle





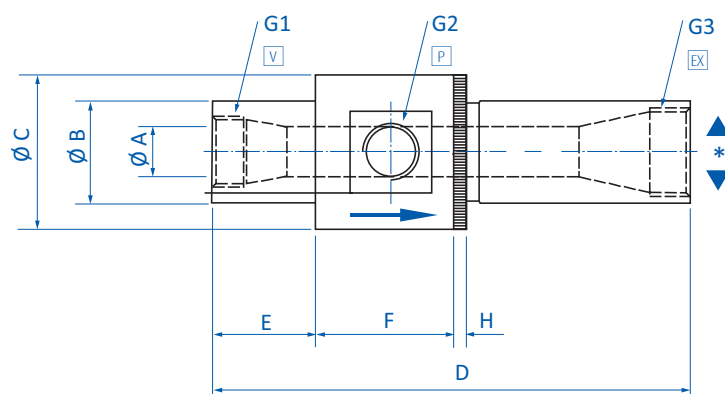
### Air consumption [NI/min] at vacuum level (feed pressure 5.5 bar (79.8 psi))

Item no.	17 %	34 %	50 %	68 %	84 %
65.701	112	169	233	276	342
65.711	176	327	485	595	825
65.731	650	875	1250	1790	2550

### Suction power [NI/min] at vacuum level (feed pressure 5.5 bar (79.8 psi))

Item no.	17 %	34 %	50 %	68 %	84 %
65.701	280	240	200	162	125
65.711	846	735	620	520	395
65.731	3390	2460	1970	1440	1130

### Dimensions



V = Vacuum connection P = Compressed air connection EX = Exhaust outlet (R) \* = rotatable

Item no.	G1	G2	G3	Ø A [mm]	Ø B [mm]	Ø C [mm]	D [mm]	E [mm]	F [mm]	H [mm]
65.701	G1/4	G1/8	G1/4	6.5	19	32	94 - 105	22	32	5
65.711	G3/8	G3/8	G1/2	10	25	45	155 - 165	38	45	5
65.731	G3/4	G1/2	G1	19	38	58	175 - 189	38	51	5