



### Flat vacuum cups with fully assembled fitting – SP-F




#### Product notes

Universal flat vacuum cups in even or supported design. Series with sensing valve prevents dropping of the product if individual vacuum cups in a system are not in contact with the product.  
Version: Complete with vacuum cup fitting and filter screen.

#### Advantage

- > High suction force
- > Fast cycle times possible
- > Very resistant to wear (Tepuflex®)
- > Compatible with established products from other vendors

#### Technical data

Item no.	Model	Connection thread		Material / Color	Accessories
<b>Smooth design with fitting &amp; filter screen</b>					<b>Spare vacuum cup:</b>
120.020.006.*	SP-F-20	G1/8-male, M5-female	2.5	SI (tr), CR (sw)	102.020.095.*
120.030.013.*	SP-F-30	G1/8-male, M5-female	3.5	SI (tr), CR (sw)	102.030.096.*
120.040.076.*	SP-F-40	G1/8-female	4	SI (tr), CR (sw)	102.040.094.*
120.050.078.*	SP-F-50	G1/8-female	6.5	CR (sw)	102.050.097.9
<b>Smooth design with fitting, filter screen &amp; touch valve</b>					
121.030.006.*	SP-F-30	G1/8-male, M5-female	2.5	CR (sw)	102.030.096.9
121.040.007.*	SP-F-40	G1/8-female	4	CR (sw)	102.040.094.9
<b>With cleats, fitting &amp; filter screen</b>					
123.020.003.*	SP-FA-20	G1/8-male, M5-female	1	Tepuflex® (or), SI (tr), CR (sw)	125.020.004.*
123.025.010.*	SP-FA-25	G1/8-male, M5-female	1	SI (tr), CR (sw)	125.025.007.*
123.030.019.*	SP-FA-30	G1/8-male, M5-female	2	Tepuflex® (or), SI (tr), CR (sw)	125.030.010.*
123.040.028.*	SP-FA-40	G1/8-female	2	SI (tr), CR (sw)	125.040.013.*
123.050.034.*	SP-FA-50	G1/8-female	2.5	Tepuflex® (or), SI (tr), CR (sw)	125.050.017.*
<b>With cleats, fitting, filter screen &amp; touch valve</b>					
124.030.002.*	SP-FA-30	G1/8-male, M5-female	2	SI (tr)	125.030.010.2
124.040.006.*	SP-FA-40	G1/8-female	2	SI (tr)	125.040.013.2
124.050.009.*	SP-FA-50	G1/8-female	2.5	SI (tr), CR (sw)	125.050.017.*

\* When ordering please add the appropriate material code to item no. You will find it on [www.fipa.com](http://www.fipa.com).

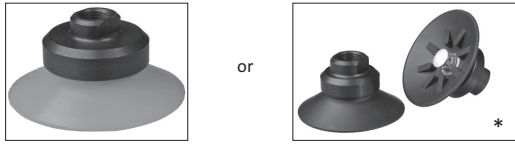


# Flat vacuum cups series

Flat vacuum cups with fully assembled fitting – SP-F

## Flat vacuum cups with fully mounted fitting

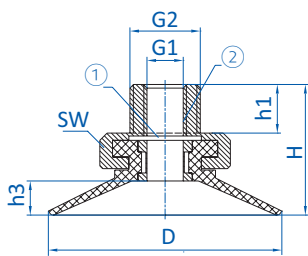
Example:



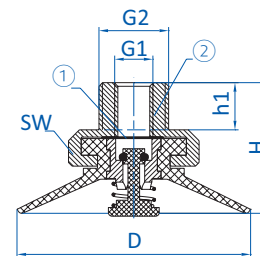
\* Version with touch valve available only for flat vacuum cups in smooth design and flat vacuum cups with cleats

- > High process reliability thanks to permanently installed fitting
- > Worn sealing lips can be replaced if necessary

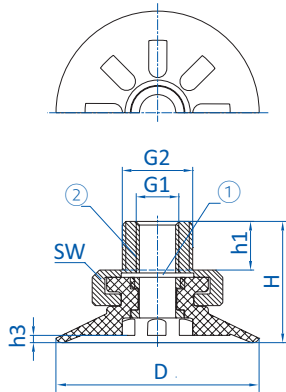
## Dimensions



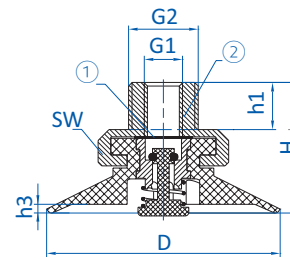
Drawing A



Drawing B



Drawing C



Drawing E

① = Filter screen ② = Aluminum

Item no.	Drawing	Ø D [mm]	Ø d4 [mm]	G1	G2	H [mm]	h1 [mm]	h3 [mm]	SW
<b>Smooth design with fitting &amp; filter screen</b>									
120.020.006.*	A	22	--	M5	G1/8	15.5	6.5	3	17
120.030.013.*	A	32	--	M5	G1/8	18	6.5	4.5	17
120.040.076.*	A	42	--	G1/8	--	22	--	6	12
120.050.078.*	A	52	--	G1/8	--	27	--	8.5	12
<b>Smooth design with fitting, filter screen &amp; touch valve</b>									
121.030.006.*	B	32	--	M5	G1/8	18	6.5	--	17
121.040.007.*	B	42	--	G1/8	--	22	--	--	12
<b>With cleats, fitting &amp; filter screen</b>									
123.020.003.*	C	22	--	M5	G1/8	15.5	6.5	0.9	17

\* When ordering please add the appropriate material code to item no. You will find it on [www.fipa.com](http://www.fipa.com).

# Flat vacuum cups series

Flat vacuum cups with fully assembled fitting – SP-F



Item no.	Drawing	Ø D [mm]	Ø d4 [mm]	G1	G2	H [mm]	h1 [mm]	h3 [mm]	SW
123.025.010.*	C	28	--	M5	G1/8	16.5	6.5	1	17
123.030.019.*	C	32	--	M5	G1/8	18	6.5	1.2	17
123.040.028.*	C	42	--	G1/8	--	22	--	2.1	12
123.050.034.*	C	53	--	G1/8	--	26	--	2	12
<b>With cleats, fitting, filter screen &amp; touch valve</b>									
124.030.002.*	E	32	--	M5	G1/8	18	--	1.2	17
124.040.006.*	E	42	--	G1/8	--	22	--	2.1	12
124.050.009.*	E	53	--	G1/8	--	26	--	2	12

\* When ordering please add the appropriate material code to item no. You will find it on [www.fipa.com](http://www.fipa.com).