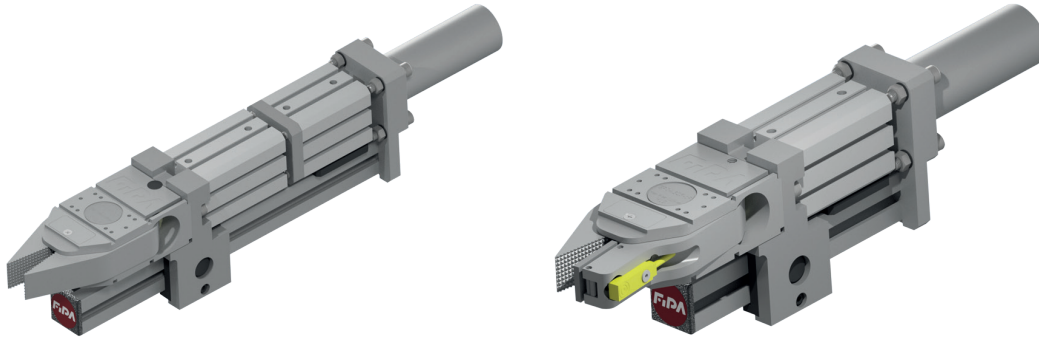




# Grippers | Sprue grippers

Series 325 – grippers with stroke – single-acting

## Series 325 – grippers with stroke – single-acting



### Product notes

- > Very strong, single-action power gripper with single or double stroke
- > Ideally suited for matrix removal, especially of large components
- > Optionally available with direct sensor scanning (Sensor with 3-pin male and M8 connector included in scope of delivery)
- > Clamping force measured at the jaw tip
- > The end positions of the lifting cylinders can be sensed with optional sensors
- > Optional stroke limiters are available for easy adjustment of the cylinder stroke
- > Standard clamping diameter 30 mm, available on request with clamping diameter 20 mm
- > Other customer-specific designs or adaptations are possible and easy to implement – please contact our sales department

### Technical data

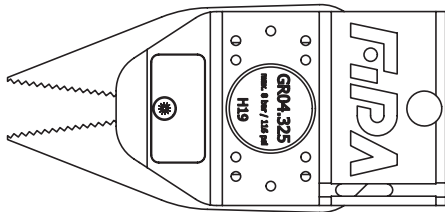
Item no.	Jaw	Stroke 1 [mm]	Stroke 2 [mm]	Sensor	Closing force at 6 bar (87 psi) [N]	Lifting force at 6 bar (87 psi) [N]	Operating pressure [bar (psi)]	Weight [g]	Accessories
<b>GR04.325-30</b>	Standard	30	without	without	365	290	2.5 - 6 (36.3 - 87)	879	Sensor: GR04.202N Sensor: GR04.202P Sensor: GR04.280N Sensor: GR04.280P Stroke limiters: GR04.229-KIT
<b>GR04.325-30-1P</b>	Standard	30	without	PNP	365	290	2.5 - 6 (36.3 - 87)	907	Sensor: GS04.001 Sensor: GR04.202N Sensor: GR04.202P Sensor: GR04.280N Sensor: GR04.280P Stroke limiters: GR04.229-KIT
<b>GR04.325-20-10</b>	Standard	20	10	without	365	290	2.5 - 6 (36.3 - 87)	1,013	Sensor: GR04.202N Sensor: GR04.202P Sensor: GR04.280N Sensor: GR04.280P Stroke limiters: GR04.229-KIT
<b>GR04.325-30-10</b>	Standard	30	10	without	365	290	2.5 - 6 (36.3 - 87)	1,049	Sensor: GR04.202N Sensor: GR04.202P Sensor: GR04.280N Sensor: GR04.280P Stroke limiters: GR04.229-KIT
<b>GR04.325-30-20</b>	Standard	30	20	without	365	290	2.5 - 6 (36.3 - 87)	1,078	Sensor: GR04.202N Sensor: GR04.202P Sensor: GR04.280N Sensor: GR04.280P Stroke limiters: GR04.229-KIT
<b>GR04.325-20-10-1P</b>	Standard	20	10	PNP	365	290	2.5 - 6 (36.3 - 87)	1,041	Sensor: GS04.001 Sensor: GR04.202N Sensor: GR04.202P Sensor: GR04.280N Sensor: GR04.280P Stroke limiters: GR04.229-KIT



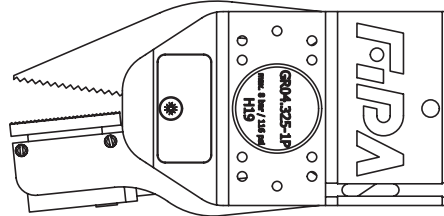
Technical data

Item no.	Jaw	Stroke 1 [mm]	Stroke 2 [mm]	Sensor	Closing force at 6 bar (87 psi) [N]	Lifting force at 6 bar (87 psi) [N]	Operating pressure [bar (psi)]	Weight [g]	Accessories
GR04.325-30-10-1P	Standard	30	10	PNP	365	290	2.5 - 6 (36.3 - 87)	1,077	Sensor: GS04.001 Sensor: GR04.202N Sensor: GR04.202P Sensor: GR04.280N Sensor: GR04.280P Stroke limiters: GR04.229-KIT
GR04.325-30-20-1P	Standard	30	20	PNP	365	290	2.5 - 6 (36.3 - 87)	1,106	Sensor: GS04.001 Sensor: GR04.202N Sensor: GR04.202P Sensor: GR04.280N Sensor: GR04.280P Stroke limiters: GR04.229-KIT

Jaw



Standard without sensor



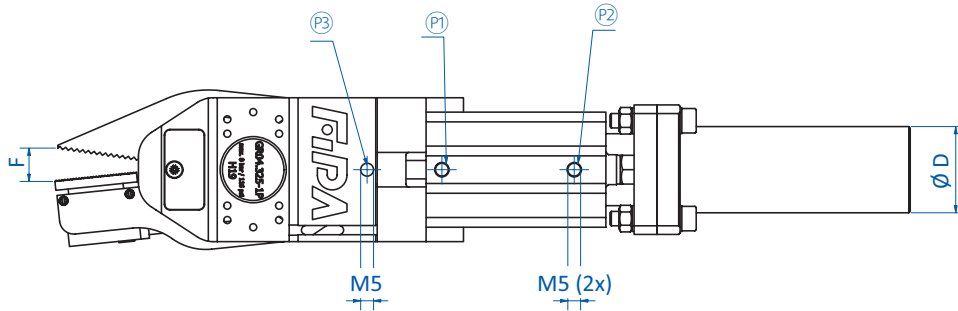
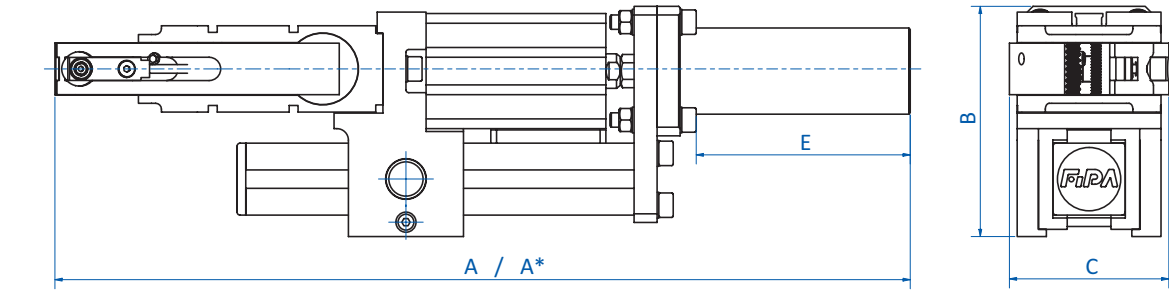
Standard with sensor



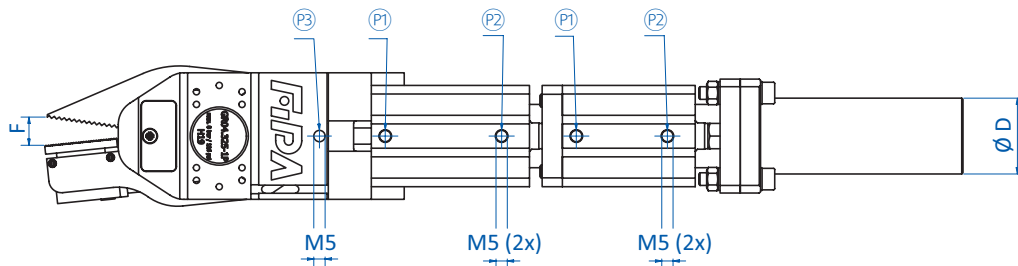
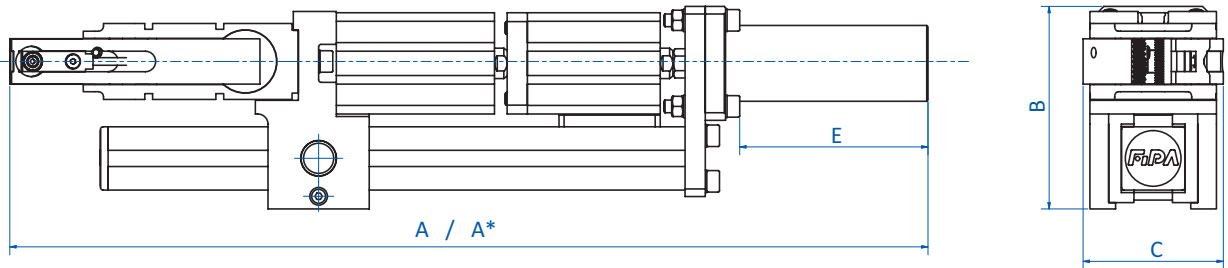
# Grippers | Sprue grippers

Series 325 – grippers with stroke – single-acting

## Dimensions



GR04.325-30 | GR04.325-30-1P



GR04.325-20-10 | GR04.325-30-10 | GR04.325-30-20 | GR04.325-20-10-1P | GR04.325-30-10-1P | GR04.325-30-20-1P

Ⓟ = Compressed air connection cylinder extended   Ⓠ = Compressed air connection cylinder retracted   Ⓡ = Compressed air connection gripper  
 \* = Length A\* = A + Stroke 1 + Stroke 2

Item no.	A [mm]	A* [mm]	B [mm]	C [mm]	Ø D [mm]	E [mm]	F [mm]
GR04.325-30	297	327	80	54	30	75	14
GR04.325-30-1P	298	328	80	55	30	75	12
GR04.325-20-10	343	373	80	54	30	75	14
GR04.325-30-10	353	393	80	54	30	75	14
GR04.325-30-20	363	413	80	54	30	75	14
GR04.325-20-10-1P	343	373	80	55	30	75	12
GR04.325-30-10-1P	353	393	80	55	30	75	12
GR04.325-30-20-1P	363	413	80	55	30	75	12