



Series | Oval vacuum cups SO

High temperature HNBR oval cups – SKH-O

High temperature HNBR oval cups – SKH-O

UP TO 160 °C (320 °F) & MINIMUM MARKING



Product description

Oval vacuum cups for smooth surfaces suitable for removing hot plastic parts to be painted from an injection molding machine. Connection via plug-in nipple.

Advantage

- > Free of silicone and other paint-wetting-impairment substances (PWIS)
- > Minimum-marking
- > Significantly increased suction force compared to round vacuum cups of the same width
- > Soft sealing lip also allows adhesion to curved products

Ordering notes:

From size 15x5 mm upward, a gripper clamp (available separately) is recommended to prevent inadvertent rotation

Technical data

| Item no. | Model / Lip dimensions | Nipple | Material / Colour | Usage temperature [°C (°F)] |
|-----------------|------------------------|--------|-------------------|-----------------------------|
| 132.4x2.031.* | SKH-O-4x2A | 0.5 | HNBR (ge) | 0 - 160 (32 - 320) |
| 132.7x4.034.* | SKH-O-7x4 | 0.8 | HNBR (ge) | 0 - 160 (32 - 320) |
| 132.15x5.067.* | SKH-O-15x5 | 1 | HNBR (ge) | -- |
| 132.24x8.066.* | SKH-O-24x8 | 1 | HNBR (ge) | -- |
| 132.36x12.068.* | SKH-O-36x12 | 2 | HNBR (ge) | -- |
| 132.45x15.064.* | SKH-O-45x15 | 3 | HNBR (ge) | -- |

Accessories

Clamp:

--
--
78.030
78.032
78.032
78.033

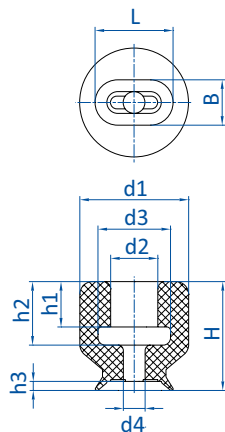
Accessories

| Item no. | Suitable fittings | | | | | |
|-----------------|-------------------|---------|---------|-----------|-----------|-------------|
| | M3-male | M4-male | M5-male | G1/8-male | G1/4-male | G1/4-female |
| 132.4x2.031.* | 270.014 | 270.111 | 270.300 | -- | -- | -- |
| 132.7x4.034.* | 270.014 | 270.111 | 270.300 | -- | -- | -- |
| 132.15x5.067.* | -- | -- | -- | 270.431 | -- | -- |
| 132.24x8.066.* | -- | -- | -- | 270.431 | -- | -- |
| 132.36x12.068.* | -- | -- | -- | 270.431 | -- | -- |
| 132.45x15.064.* | -- | -- | -- | -- | 270.097 | 270.098 |

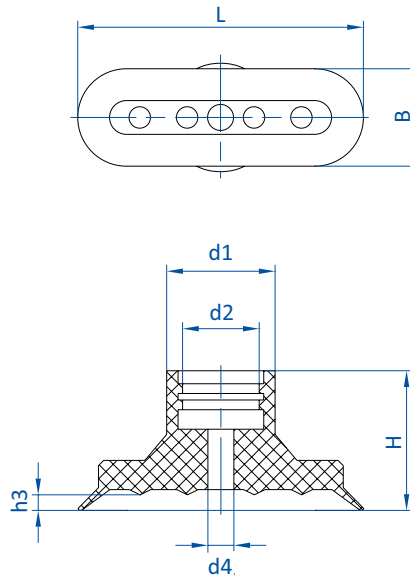
* When ordering please add the appropriate material code to item no. You will find it on www.fipa.com.



Dimensions



Drawing A



Drawing B

| Item no. | Drawing | L [mm] | B [mm] | Ø d1 [mm] | Ø d2 [mm] | Ø d3 [mm] | Ø d4 [mm] | H [mm] | h1 [mm] | h2 [mm] | h3 [mm] |
|------------------|---------|--------|--------|-----------|-----------|-----------|-----------|--------|---------|---------|---------|
| 132.4x2.031._* | A | 4.3 | 2.5 | 6 | 2.6 | 4 | 1.2 | 6 | 2.5 | 3.5 | 0.5 |
| 132.7x4.034._* | A | 7.5 | 4 | 6 | 2.4 | 3 | 1.4 | 6 | 2.3 | 3 | 0.7 |
| 132.15x5.067._* | B | 15 | 5 | 9 | 5 | -- | 2 | 12 | -- | -- | 0.8 |
| 132.24x8.066._* | B | 24 | 8.5 | 12.5 | 5 | -- | 3 | 13 | -- | -- | 1.5 |
| 132.36x12.068._* | B | 36 | 12 | 12 | 5 | -- | 4 | 12 | -- | -- | 1.6 |
| 132.45x15.064._* | B | 44 | 15 | 16.5 | 11 | -- | 4 | 22 | -- | -- | 2.4 |

* When ordering please add the appropriate material code to item no. You will find it on www.fipa.com.